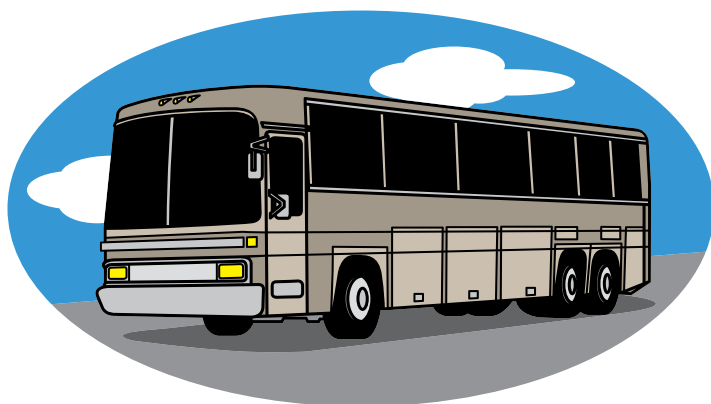




Group Tour Opportunities



MUSEUMS AT THE CROSSROADS

an adventure in every direction!

Stop by. We're in the neighborhood.

No wonder we called our consortium “Museums at the Crossroads.” Centrally located between Chicago, Indianapolis, and St. Louis, we're on your way, no matter where you're going in the U.S. Midwest. As a college area—the home of the University of Illinois and Parkland College—we can offer a magnificent diversity of opportunity for fun, learning, and adventure without the headaches of big city prices and big city traffic.

Welcome to Champaign County, Illinois. Read about our museums and the many ways we suggest visiting us and our friends throughout the area. We're going to have a wonderful time!

Table of Contents

Our Museums

Anita Purves Nature Center	2
Champaign County Historical Museum	2
Chanute Air Museum	3
Early American Museum	3
Krannert Art Museum	4
Orpheum Children's Science Museum	4
Parkland Art Gallery	5
Spurlock Museum	5
William M. Staerkel Planetarium	6

Map of Museum Locations	6
--------------------------------	----------

Our Suggested Itineraries

A Tour and Tea	7
Prairie Earth and Sky	7
Stories and Science and Culture: Oh My!	8
Shoot for the Stars	8
SCIENCE RULES!	9
A Taste of Parkland College	9



The Consortium is happy to work with the Champaign County Convention and Visitors Bureau. Visit the CVB website or contact Angela Ingerson for more information about venue possibilities.

Our Museums

Anita Purves Nature Center

1505 N. Broadway
Urbana, IL 61801
217/384-4062
Fax: 217/384-1052
www.urbanaparks.org



The Anita Purves Nature Center and adjacent Busey Woods, located at the north end of Crystal Lake Park, is an environmental education facility open free to the public. The Nature Center features four multipurpose rooms, an exhibit Field Station, a Wildlife Observation Room, a Gift Shop and an Educator Resource Room.

Hours:

Monday through Friday: 8 AM—5 PM Saturday: 9 AM—4 PM Sunday: closed

Call 217/384-4062 for group tour reservations.
Motorcoach parking available. Handicap accessible.

Champaign County Historical Museum at the Cattle Bank

102 E. University Avenue
Champaign, IL 61820
217/356-1010
Fax: 217/356-1478
www.champaignmuseum.org



The Champaign County Historical Museum is located at the Cattle Bank in downtown Champaign, the oldest known existing building in Champaign County and listed on the National Register of Historic Places. The Bank, along with the adjoining Oakley Building, houses both permanent and revolving exhibits on Champaign County and the lives of its people. Since 1974, the Museum has served as the repository for Champaign County history. The Museum recounts local and family history through its extensive collections of photographs, clothing, furniture, textiles, documents and other everyday objects.

Hours:

Saturday: Noon to 5:00 PM; other hours by appointment

Call 217/356-1010 for group tour reservations or appointments.
Partially handicap accessible.

Chanute Air Museum

1011 Pacesetter Drive
Rantoul, IL 61866
217/893-1613
Fax: 217/892-5774
www.aeromuseum.org



The Octave Chanute Aerospace Museum opened in 1994 after the closure of Chanute Air Force Base. The Museum preserves and interprets the life and accomplishments of Octave Chanute, Chanute Air Force Base, the heritage of Illinois aviation, and Illinois aviation pioneers. The Museum's holdings include artifact, library, and photograph collections. Visitors can experience over 40 historic aircraft such as a P-51H and XB-47, and explore exhibits telling the story of Chanute AFB, the Tuskegee Airmen's 99th Pursuit Squadron, early attempts at human flight, and much more. Facilities rental available.

Hours: Monday—Saturday 10 AM—5 PM Sunday noon—5 PM

For more information or to arrange a tour, call Robyn at 217/893-1613 or volunteers@aerospace.org. Motorcoach parking on-site. Wheel chair accessible.

Early American Museum

P.O. Drawer 1040
Mahomet, IL 61853
One mile north of I-74 on Route 47 in Mahomet.
10 miles west of Champaign-Urbana
217/586-2612
Fax: 217/586-3491
www.earlyamericanmuseum.org



The museum explores the history of Champaign County and east-central Illinois. Exhibits include information on life in the 19th century, farming tools, the Civil War and blacksmithing. The museum's hands-on Discovery Area allows children to try on clothing, visit a wigwam, play games and more. The museum is accredited by the American Association of Museums and is recognized for having achieved high standards in education, administration and the care of its collections.

Hours/General Public Admission Fees:

Open daily March 1st to December 31st , 1 PM—5 PM. Open Memorial Day to Labor Day 10 AM—5 PM except Sundays. Open summer Sundays 1 PM—5 PM.

Contact Charlsie Tice at 217/586-2612 for group tour reservations.
Motorcoach parking on-site. Wheelchair accessible.

Krannert Art Museum and Kinkead Pavilion

500 East Peabody Drive
Champaign, Illinois 61820
217/333-1861
Fax: 217/333-0883
www.kam.uiuc.edu



Krannert Art Museum's collection of over nine thousand works of art represents the cultures of Africa, Asia, Europe, and the Americas. In addition to its permanent collection, the museum offers outstanding temporary exhibitions that are complemented by a full program of public lectures, music and dance performances, and film screenings. Krannert Art Museum's Giertz Education Center serves educators by providing workshops and a free-loan collection of over 5000 art and cultural objects and instructional items. To receive KAM's E-news, email kam@uiuc.edu.

Hours

Tuesday—Saturday 9 AM—5 PM Thursday until 9 PM
Sunday 2—5 PM Call for summer hours

Call 217/333-1861 for further museum information or to schedule a group tour.
Motorcoach parking available. Handicap accessible.

Orpheum Children's Science Museum

346 North Neil Street
Champaign, Illinois 61820
217/352-5895
Fax 217/352-8160
www.orpheumkids.org



The historic 1914 Orpheum Theatre is home to a hands-on children's science museum. Designed by Rapp and Rapp of Chicago, the theatre is listed on the National Register of Historic Places. Exhibits include live animals (snakes, tarantulas, turtles, bearded dragons, and Madagascar Hissing Cockroaches), simple machines castle, giant lever, and water tornado. We have a suite of water exhibits funded by the United States Geological Survey that includes a ten-foot water flume. Another water-related exhibit is the S.S. Ackermann, a virtual riverboat. Outdoors, as weather permits, we have Whisper Dishes, a Dino Dig, and a Rock Grotto. These exhibits encourage children to explore science at their own pace in an informal setting.

Hours:

Tuesday—Fridays, 10 AM—4 PM Saturdays — Sundays 1 PM—5 PM

Contact the museum at 217-352-5895 or orpheumkids@gmail.com for more about group tours.
Motorcoach parking is available.

Parkland Art Gallery

Parkland College
2400 W. Bradley Ave.
Champaign, IL 61821
217/351-2485
Fax: 21/373-3899
www.parkland.edu/gallery

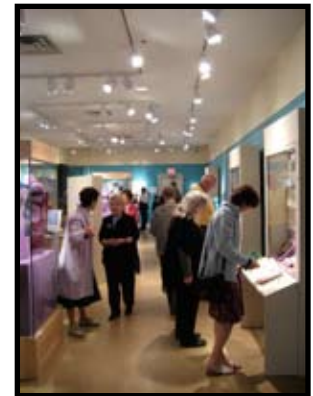


An art gallery is more than walls to hang art. It's a place where feelings and ideas are expressed, heard and inspired. The Parkland Art Gallery conveys and reflects culture through visual arts offering the diverse views on the world that can only be gained through artistic expressions. Its eight exhibits per year move from the evocative to the provocative; they seek to elate, and they seek to astonish. Paintings, photographs, sculptures, ceramics, and mixed media works are exhibited and are created by international, national, and regional artists.

Contact the Art Gallery Office at ParklandArtGallery@ParklandCollege to reserve your group tour. Motorcoach parking on-site. Parkland College is handicap accessible.

The Spurlock Museum

University of Illinois
600 S. Gregory
Urbana, IL 61801
217/333-2360
Fax: 217/244-9419
www.spurlock.uiuc.edu



Celebrating the cultures of the world, the Spurlock Museum's collections encompass six continents and 1,000,000 years of history. Five feature galleries contain visitor favorites such as European suits of armor, an ancient Egyptian mummy, and life-size warrior casts from the tomb of the first Chinese emperor. The Campbell Gallery holds changing exhibits that serve as inspiration for performances, lectures, and other educational programs in the Knight Auditorium and Zahn Learning Center.

Contact Brook Taylor to reserve a multicultural experience (217/265-0474 or taylorb@illinois.edu.) Motorcoach parking available. Handicap accessible.

William M. Staerkel Planetarium

Parkland College
 2400 West Bradley Avenue
 Champaign, IL 61821
 217/351-2568
 Fax: 217-351-2581
www.parkland.edu/planetarium



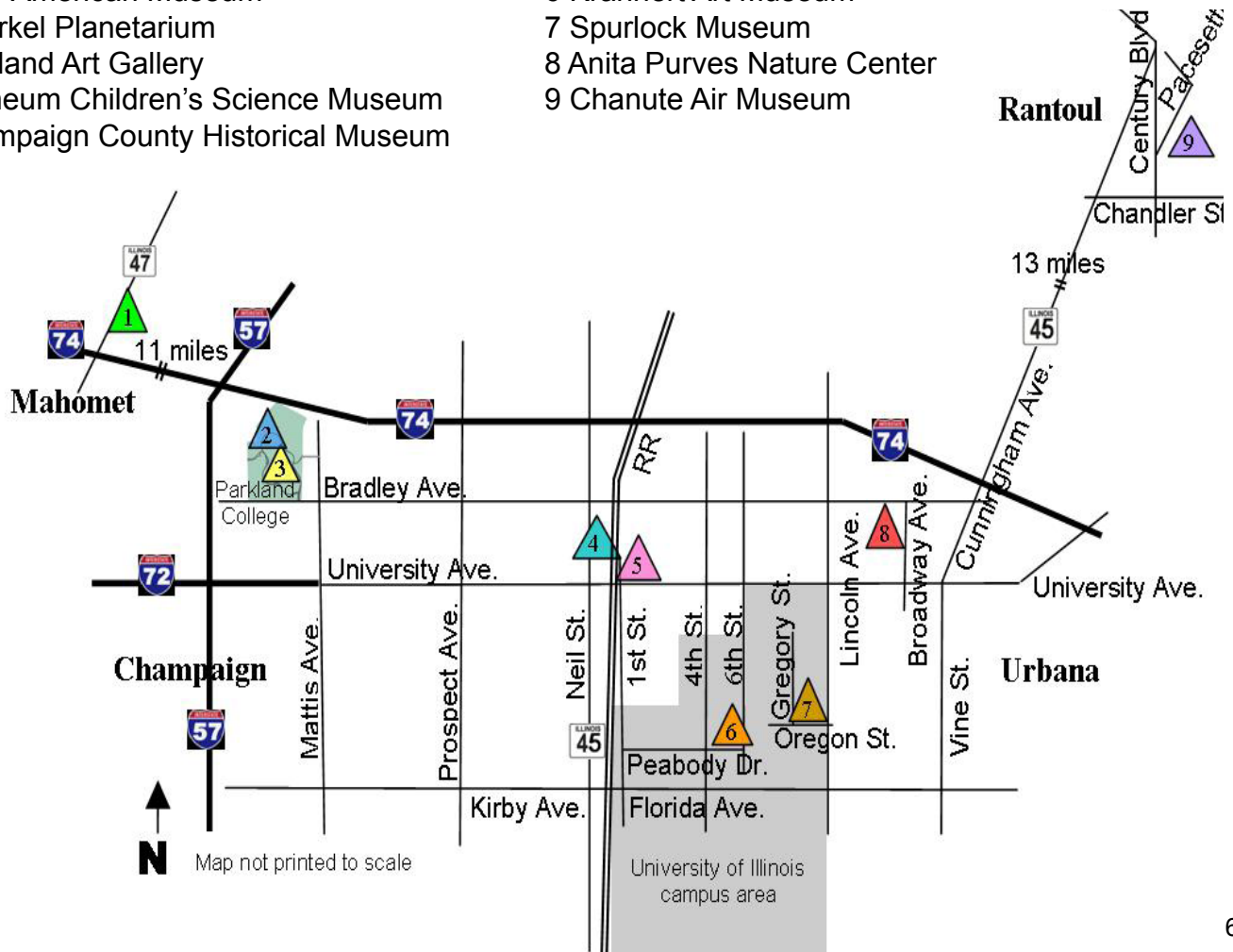
The William M. Staerkel Planetarium is the second largest planetarium in Illinois, boasting 144 seats beneath a 50-foot aluminum dome. The Carl Zeiss Star Projector, the first of its kind in the known universe, projects 7,600 stars, the Sun, Moon, and five visible planets onto our hemispheric dome. Choose from over two-dozen programs with topics ranging from exploding stars and distant galaxies to the planets and constellations from your backyard.

Contact Dave Leake to begin your cosmic excursion (217/351-2567 or dleake@parkland.edu). Motorcoach parking on-site. Handicap accessible.

Museum Locations

- 1 Early American Museum
- 2 Staerkel Planetarium
- 3 Parkland Art Gallery
- 4 Orpheum Children's Science Museum
- 5 Champaign County Historical Museum

- 6 Krannert Art Museum
- 7 Spurlock Museum
- 8 Anita Purves Nature Center
- 9 Chanute Air Museum



Our Suggested Itineraries

A Tour and Tea

Steep yourself in an afternoon of culture! Combine a whirlwind global tour—*Around the World in 60 Minutes* at the Spurlock Museum—with the quiet relaxation of a tour or tea ceremony at Japan House, only one mile away.

The Spurlock Museum offers tours to groups of up to 75 Wednesday through Friday from 9 AM—5 PM and Saturdays from 10 AM—4 PM. Visit <http://www.spurlock.uiuc.edu/education/reserving/index.html> for available dates. Prices start at \$3.00 per person.



Japan House offers free general public tours from September through May every Thursday afternoon from 1—4 PM and the third Saturday of the month from 1—5 PM. Special group tours also can be arranged. Garden tours can be reserved for a fee of \$50. A tour group of 40 would be the maximum desired.

Tea ceremonies also are held on Thursdays from September through May. All tea ceremonies are at 2 PM and 3 PM with a fee of \$5.00 per person. Some dates are prescheduled; special arrangements also can be made for group visits at a cost of \$100 in addition to the per person fee. The tea ceremony is performed for a group of 20 -30.

For more information or to reserve your tour, contact
Brook Taylor, Spurlock Museum, 217/265-0474 or taylorb@illinois.edu
Nancy Quinn, Japan House, 217/244-9934 or japanhouse@illinois.edu

Prairie Earth and Sky

Experience nature first-hand with a 1/3 mile walk across the boardwalks of historic Busey Woods, adjacent to the Anita Purves Nature Center in Urbana. Then travel across town to see *Prairie Skies* at the Staerkel Planetarium at Parkland College for a tour of the skies above. Cost: \$4 per person



The program is for groups numbering 12-36 participants.

For more information or to reserve your tour, contact
Anita Purves Nature Center, 217/384-4062.
Dave Leake, Planetarium coordinator, 217/351-2567 or dleake@parkland.edu.

Stories and Science and Culture: Oh My!

Throughout time, folktales have served as both entertainment and education for the peoples of the world. Discover how story, science, and artifacts blend through programs at the Staerkel Planetarium and the Spurlock Museum.

For millennia, tellers have explained the phenomena of the night sky through myth and story. In the program *Dusk to Dawn*, educators from three museums come together to present both ancient stories and modern scientific explanations for midnight marvels including the Milky Way and the Northern Lights. The program fee is \$4 per person.



Image courtesy of JUPITERIMAGES

Continue your cultural discovery through a *Stories around the World* tour at the Spurlock Museum. This tour combines information on selected cultural artifacts from around the world with the performance of related folktales. Program fees start at \$3 per person.

Both programs are appropriate for audiences of all ages. Program minimum: 15. Capacity: 40

For more information or to reserve your tour, contact Dave Leake, Planetarium Coordinator, 217/351-2567 or dleake@parkland.edu. Brook Taylor, Spurlock Museum, 217/265-0474 or taylorb@illinois.edu.

Shoot for the Stars!

Tour the Chanute Air Museum, the largest aerospace museum in Illinois in the heart of Rantoul and the former Chanute Air Force Base. See an impressive array of aircraft and missiles, ICBM training silos, and exhibits exploring life at Chanute Field, Early Illinois Aviation, and the 99th Pursuit Squadron of Tuskegee Airmen fame. Then head down Interstate 57 to the Staerkel Planetarium in northwest Champaign and be whisked into space via a two-story tall film entitled *Space Shuttle: An American Adventure*. This is the very first large-format movie shot in Earth orbit. It's the next best thing to being there yourself! Cost: Adults \$10, Children \$8.



Program minimum: 15. Capacity: 140

For more information or to reserve your tour, contact Robin York, Chanute Air Museum 217/893-1613 or volunteers@aerospace.org. Dave Leake, Planetarium coordinator 217/351-2567 or dleake@parkland.edu.

SCIENCE RULES!

Description: What do stars and electricity have in common? They both involve invisible energy! “See” them both first hand. Check out the *Invisible Energy* program at the Orpheum Children’s Science Museum (or choose from others at the Museum’s website www.m-crossroads.org/orpheum/ftrips.html) then see how these concepts can be applied to the cosmos on its largest scale at the Staerkel Planetarium, where you will see “Star Journey” and how we can decipher the inner works of stars through their light. See 7600 spinning stars in the second largest planetarium in the state!

Cost: Adults \$7, Children \$6



The program is for groups numbering 15-50 participants.

For more information or to reserve your tour, contact Meadow Jones, Orpheum Children’s Science Museum, 217/351-5895 or orpheum@insightbb.com. David Leake, Planetarium Coordinator 217/351-2567 or dleake@parkland.edu.

A Taste of Parkland College

Participate in cultural events at the premier community college in the heart of Illinois, home to 10,000 students. See a sky full of 7600 stars at the William M. Staerkel Planetarium, the second largest planetarium in the state. A four-minute walk takes you to the Parkland Art Gallery. Exhibits are selected to illustrate a wide range of traditional and innovative work, recognized and new talent, proven forms and fresh ones. The Gallery displays work by contemporary artists of regional and national status. If time and schedule permit, see an evening performance at the 300-seat Parkland Theatre, across from the Planetarium. Our intimate proscenium theatre provides a beautiful setting for music and theatre productions that range from comedies to Broadway-style musicals to serious contemporary plays, and it is the performance home of Parkland College Theatre productions. Cost: \$4 per person w/o theater (Theater cost and availability will depend on show schedule)



Program minimum: 15. Capacity: 35

For more information or to reserve your tour, contact Lisa Costello, Parkland Art Gallery 217/351-2485 www.parkland.edu/gallery Dave Leake, Planetarium coordinator 217/351-2567 or dleake@parkland.edu. Randi Hard, Parkland Theatre 217-351-2529 www.parkland.edu/theatre